

# 455 MARKET

**53,285 RSF** Plug & Play Available  
Expansion Potential up to **110,165 RSF**

**7th + 8th Floors | 53,285 RSF**

Creative build-out. 13' exposed ceiling. Greenhouse Windows. Plug & Play. Floors can be leased together or separately. Available now.

**5th Floor | 28,440 RSF**

Professional services build-out. Mix of offices and open area. Large tenant improvement allowance available. Available now.

**4th Floor | 28,440 RSF**

Creative build-out. 13' partially exposed ceiling. Plug & Play. Availability date negotiable.







# 455 MARKET

7th + 8th Floors | 53,285 RSF

Creative Build-Out

13' Exposed Ceiling

Greenhouse Windows

Plug & Play

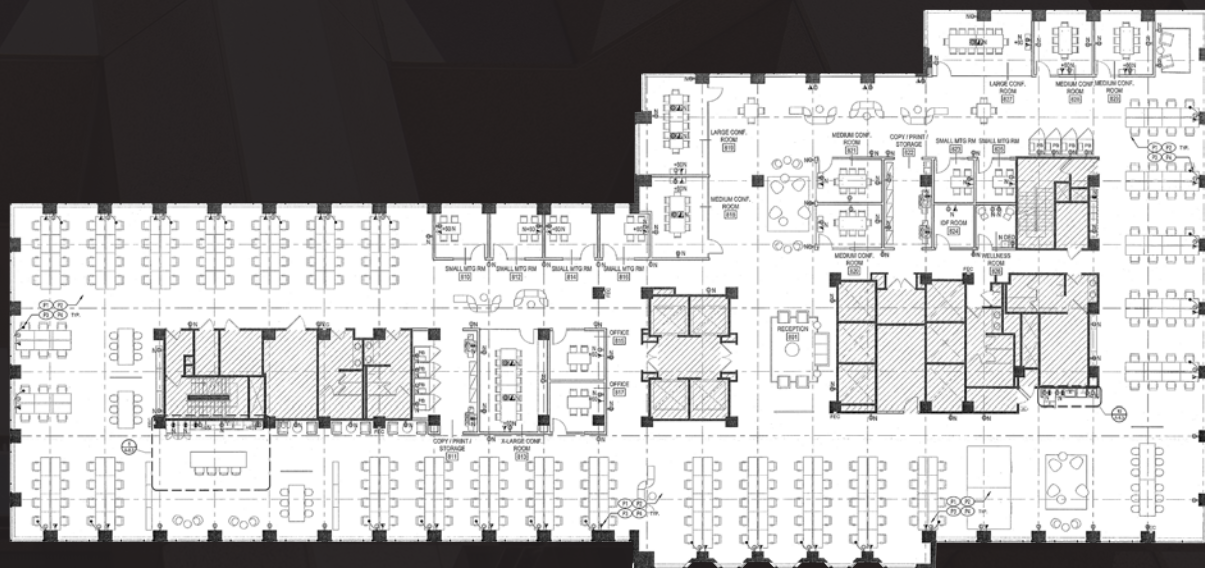
Can be Leased Together or Separately

Available Now

Expansion Potential up to 110,165 RSF



7th Floor | 28,035 RSF



8th Floor | 25,250 RSF

**David Duble** Lic. 00993334  
415 773 3568 | david.duble@cushwake.com

**John Walsh** Lic. 01008553  
415 773 3599 | john.walsh@cushwake.com



[View Site Specific COVID-19 Prevention Plan](#)



# 455 MARKET

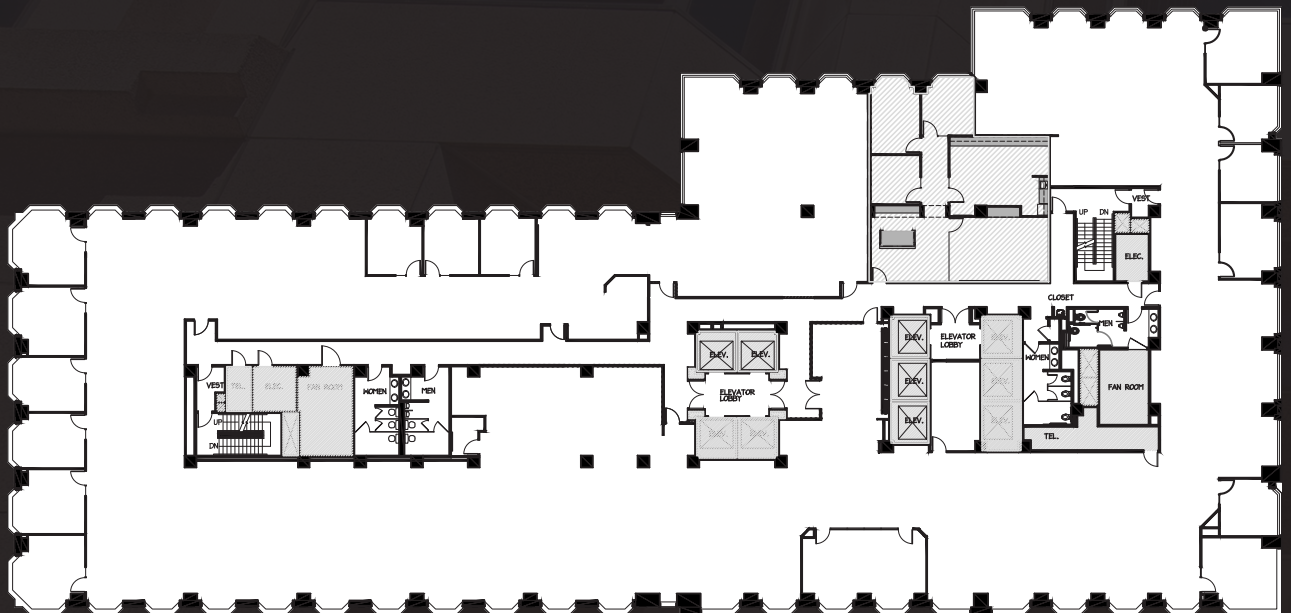
5th Floor | 28,440 RSF

Professional Services Build-Out

Mix of Offices & Open Area

Large Tenant Improvement  
Allowance Available

Available Now



**David Duble** Lic. 00993334  
415 773 3568 | [david.duble@cushwake.com](mailto:david.duble@cushwake.com)

**John Walsh** Lic. 01008553  
415 773 3599 | [john.walsh@cushwake.com](mailto:john.walsh@cushwake.com)



[View Site Specific COVID-19 Prevention Plan](#)



# 455 MARKET

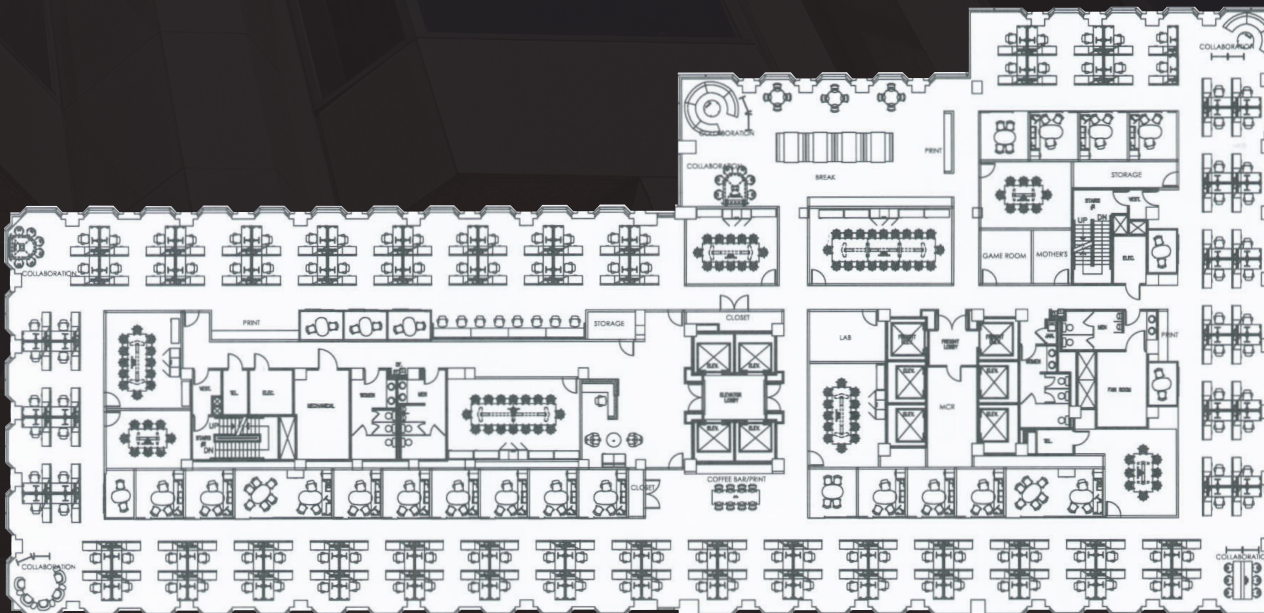
4th Floor | 28,440 RSF

Creative Build-Out

13' Partially Exposed Ceiling

Plug & Play

Availability Date Negotiable



**David Duble** Lic. 00993334  
415 773 3568 | [david.duble@cushwake.com](mailto:david.duble@cushwake.com)

**John Walsh** Lic. 01008553  
415 773 3599 | [john.walsh@cushwake.com](mailto:john.walsh@cushwake.com)



[View Site Specific COVID-19 Prevention Plan](#)

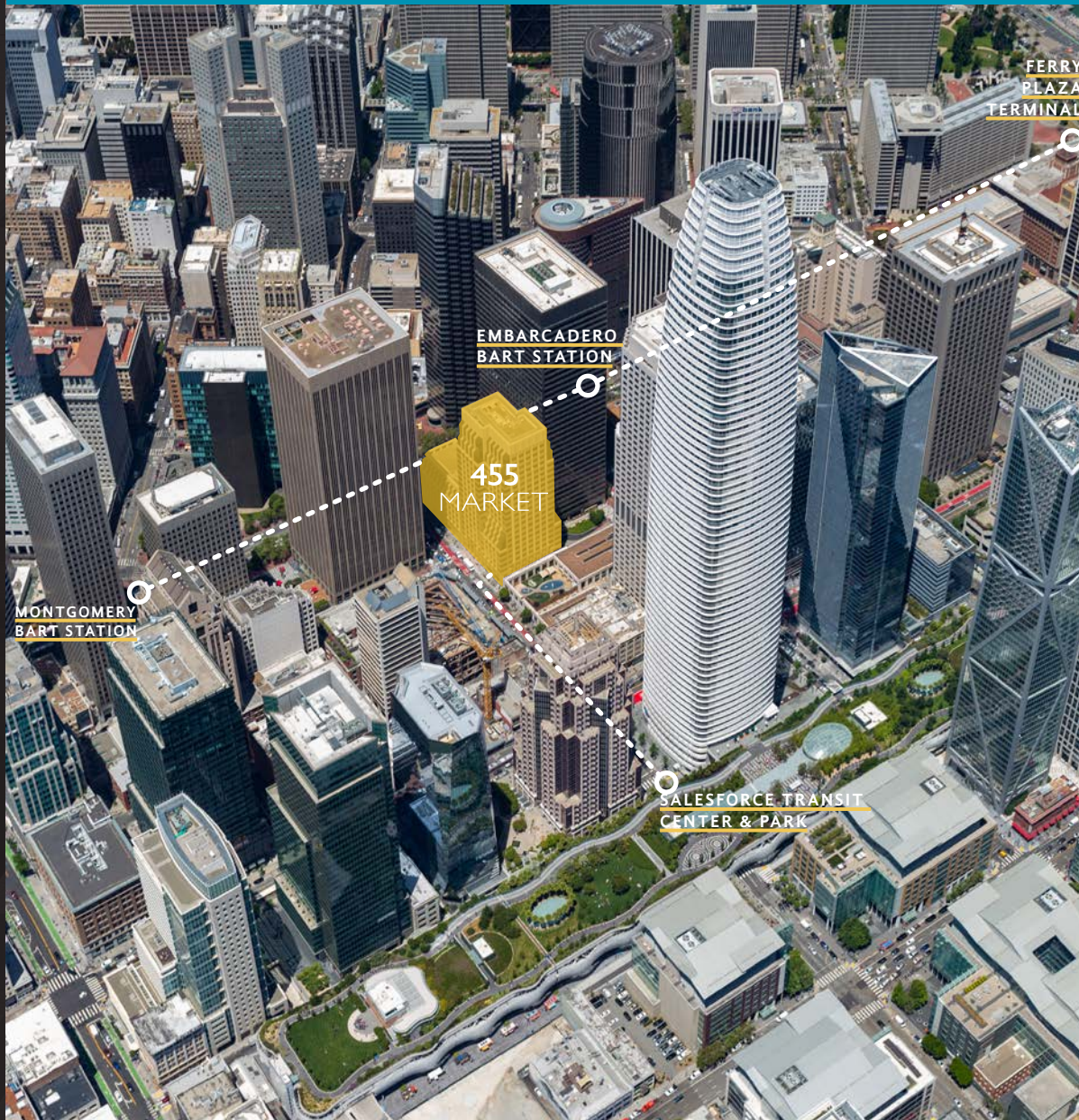




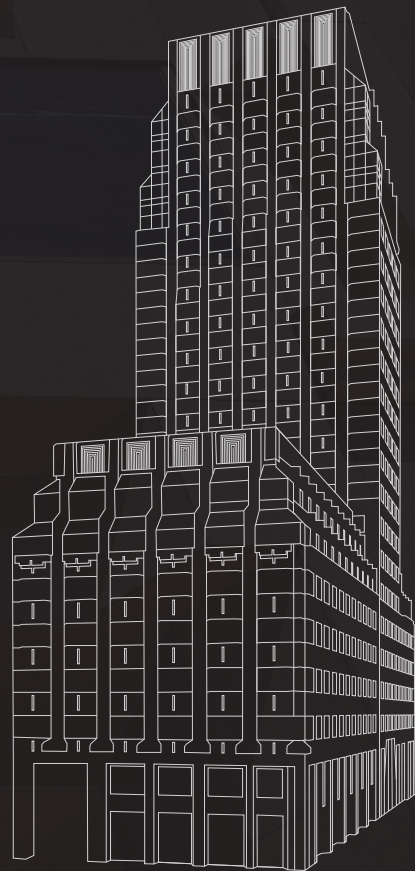
**10 MIN**  
FERRY PLAZA  
TERMINAL

**1 MIN**  
MUNI, BART  
& STREETCAR

**2 MIN**  
SALESFORCE TRANSIT  
CENTER & PARK







# 455 MARKET

**David Duble** Lic. 00993334

415 773 3568

[david.duble@cushwake.com](mailto:david.duble@cushwake.com)

**John Walsh** Lic. 01008553

415 773 3599

[john.walsh@cushwake.com](mailto:john.walsh@cushwake.com)



**CUSHMAN &  
WAKEFIELD**

©2021 Cushman & Wakefield. All rights reserved.

The information contained in this communication is strictly confidential. This information has been obtained from sources believed to be reliable but has not been verified. No warranty or representation, express or implied, is made as to the condition of the property (or properties) referenced herein or as to the accuracy or completeness of the information contained herein, and same is submitted subject to errors, omissions, change of price, rental or other conditions, withdrawal without notice, and to any special listing conditions imposed by the property owner(s). Any projections, opinions or estimates are subject to uncertainty and do not signify current or future property performance.